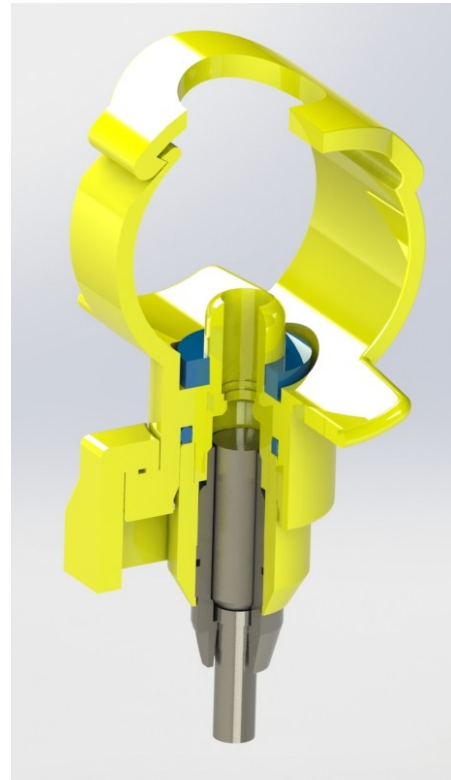

4731SV

1. Functional characteristics

- 360 degree opening
- Reference flow rates at 20 and 60 cm
H₂O: 60 ml/min, 140 ml/min

2. Recommended Uses

- To be used in combination with a drip-cup
- Perfect for breeders



3. Product description

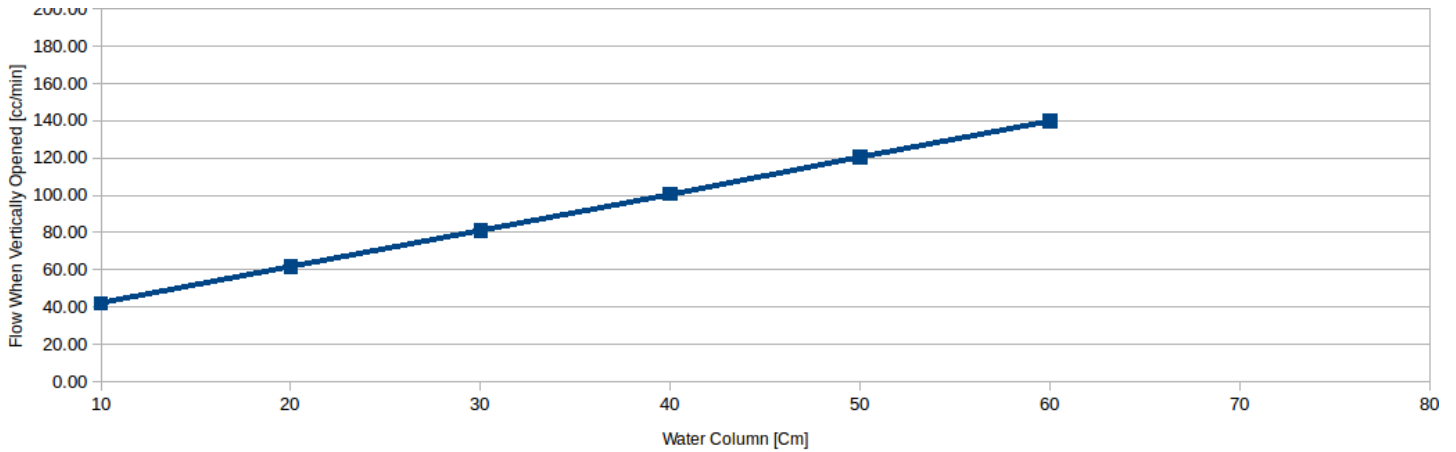
(a) Drinker composed by 5 main elements:

- Main plastic body with clip retainer for pipe support
- Inox plot
- Inox stem
- Inox internal seal
- Plastic support for round pipes

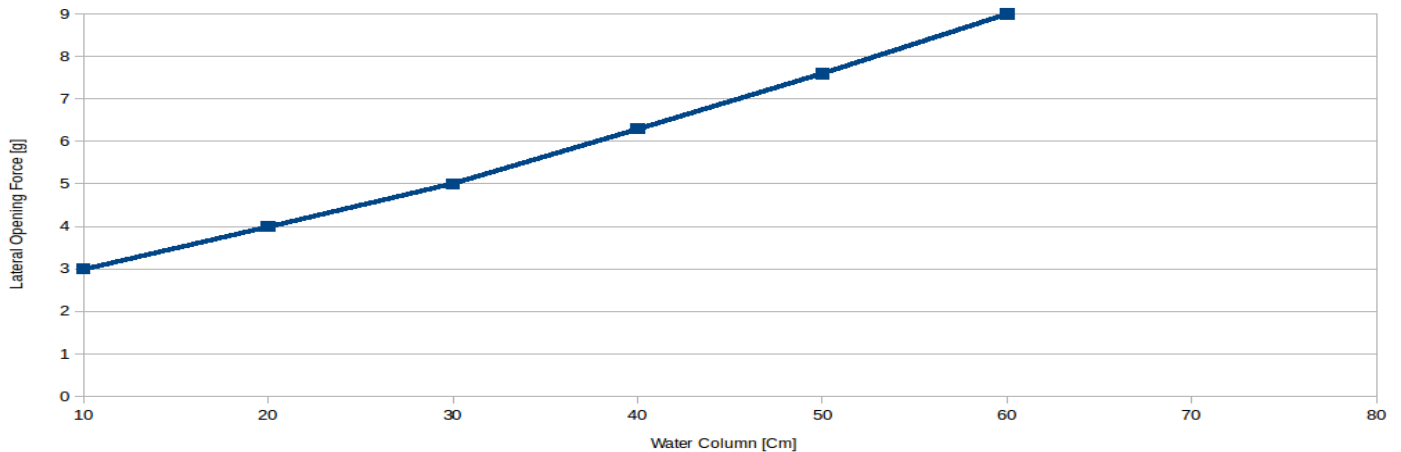
(b) Weight: 24 grams

4. Ratings

Water flow for 4731SV +/- 15%



Opening forces for 4731SV +/- 15%



5. Product Revisions:

Document first created : 2017/01/24

DISCLAIMER:

Information contained in this document represents average properties obtained from commercial production lots and should not be considered guaranteed specifications..