

PATENTED



INFINITY

Corti Zootechnici's Feeder



**The feeder that optimises the growth
of the animal over its entire life cycle**

Minimalist design

allows more feeding space for the animals while ensuring cost-effectiveness by increasing the efficiency of feeding systems by meeting the capacity of 100 animals per feeder*.



The inability of the chick to enter the feeder

ensures that the feed is not wasted and remains fresh and palatable, free of contamination. It does not require an additional feeder for the first few days of life.



No feed wastage in adult chicken

maximising the education of the adult animal (even for broilers over 4 kg) so that it avoids selecting and thus wasting food.



Adjustment of minimum and maximum feed level

from the seventh day of the animal's life, with absolutely no feed wastage and evenly distributed feed.



The filling of troughs in reduced time spans

ensures the animal's continuous stimulation to feed and the freshness of the feed is permanently renewed.



INFINITY

Corti Zootecnici's Feeder

The **INFINITY** feeder has been designed to meet the different requirements of broiler rearing, both for floor and cage rearing, optimising and reducing the farmer's manual labour.

In addition, it guarantees the best conversion rates, offering a feed that is always fresh and above all free of contamination, guaranteeing absolute uniformity of feed distribution within the installations.



Chickens



Chicks



Laying hens



Chickens



Turkey*

only for weaning*



Possibility of adding the anti-waste collar art. 445509G.

For hens in production, maximises conversion while maintaining uniformity of the animals.

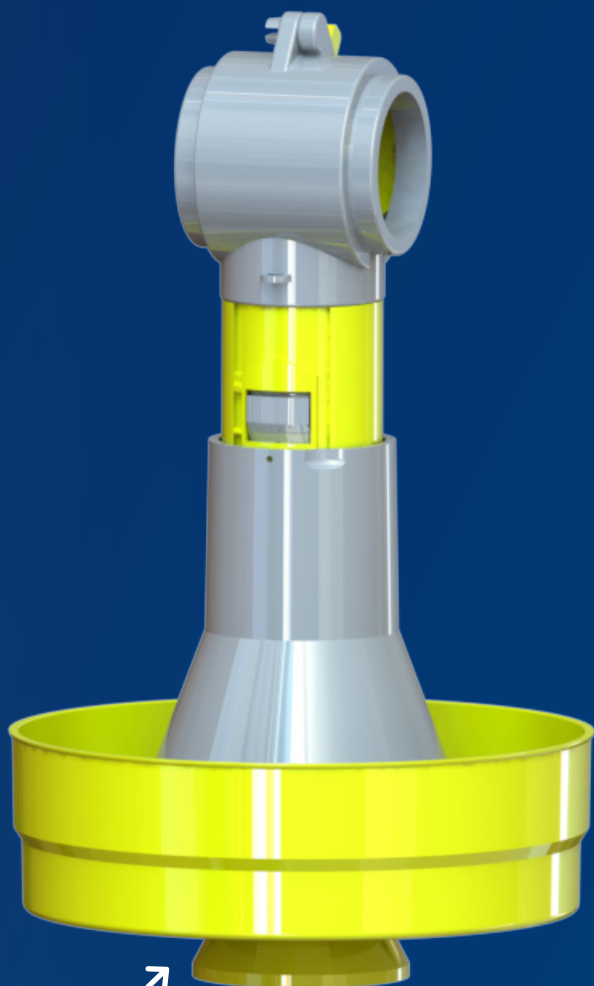
**Two levels of regulation
according to the type of feed**



DISCOVER INFINITY FOR BROILERS

the future of cage feeding is already a reality!

The Infinity feeder (in cage chicken version), represents the ultimate evolution in cage feeding with the following advantages:



AUTOMATIC VERSION

It allows adjustment of the feed level by adjusting only the height of the feeder line.

- 1 Maximising the conversion** food conversion of the animal at both the early and late life cycle.
- 2 Facilitated access to feed** from the earliest first hours of life for chicks of all weights and weight and size without the need for additional feed supplements.
- 3 Absence of feed wastage** in the adult phase with conditioning of the animal's feeding habit.
- 4 Very small footprint** inside the cage.
- 5 Practicality and absolute precision in adjustment of feed.**
- 6 Absolute uniformity of distribution** of the feed in each cage box.
- 7 Essentiality of forms for carrying out any cleaning and disinfection** operation disinfection with extreme ease.



Use a **QR code reader** on your device to access our website.



Via Volta 4, Monvalle (VA) 21020, Italy
info@cortizootecnici.com | +39 0332 799 985 | www.cortizootecnici.it