

WATERERS FEEDERS

for rearing and fattening of

TUKEYS

PATENT PENDING



MADE IN ITALY



WATERER ACQUAPRESENTE ST

Turkey rearing unit with 22x22 mm square tube . **Cod. 4260R**

The long-standing experience in the production of drinkers has allowed Corti Company to develop the ACQUAPRESENTE ON-DEMAND DRINKER for turkey rearing.

The ease with which turkeys can drink from the very first hours of life without water wastage, the guarantee of keeping the litter perfectly dry from the first days, and the assurance of always maintaining clean water represent the ideal conditions for allowing the animals to develop their genetic potential and achieve the best performance during the rearing phase.

This product is ideal for applying the IMPRINTING concept in turkey rearing, ensuring that the animals remain in the area with the highest thermal comfort and consequently achieve the best performance during the first weeks of life (see photo).

The "acquapresente" concept represents the highest expression of the animal's immediate satisfaction when drinking, ensuring water intake under any environmental condition.

Moreover, the drinker and its supply system allow the animal to self-regulate autonomously in meeting its own needs.

It is possible to use, from the very first hours of life, water column pressures of 20–30 cm, avoiding the troublesome formation of air bubbles in the water supply lines, which normally occurs when using excessively low pressures. The use of the triangular support, specifically designed to standardize the height of the lines during the 1st and 2nd day of the birds' life, is recommended. A stocking rate of 40–50 birds per Acquapresente drinker is advised under ideal environmental conditions.

The system can be used up to 45–50 days of age for female turkeys with a density of 7–8 birds/m², and up to 40–45 days of age for male turkeys with a density of 5–6 birds/m². In case of higher stocking densities, it is recommended to reduce the number of days of use.



FEEDER

INFINITY TZC3

The feeder that optimizes turkey rearing from the very first hours of life.
Cod. 4455

The INFINITY feeder for turkey rearing has been designed to meet the needs of turkeys from the very first hours of life, providing immediate access and perfect visibility of the feed, thereby optimizing the rearing phase.

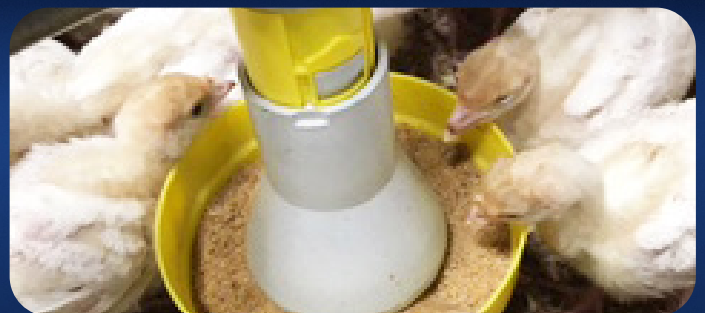
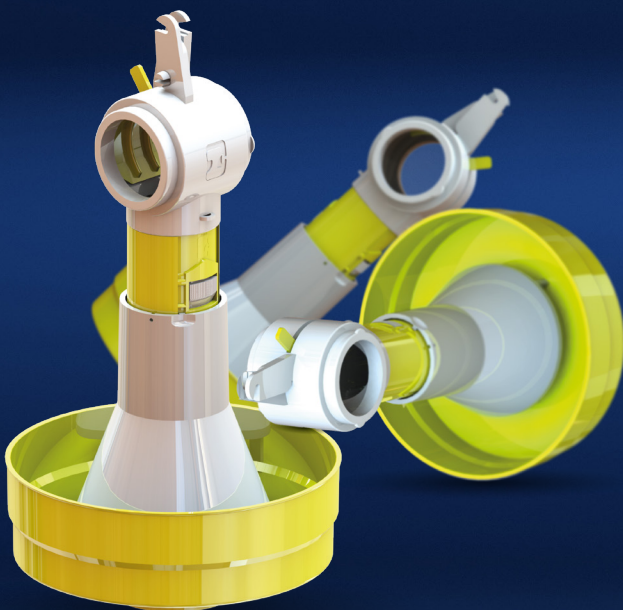
It offers turkeys feed that is always fresh, highly visible, and easy to consume, completely free from contamination by preventing the birds from accessing the interior of the feeder—an essential requirement to ensure excellent palatability. At any stage of rearing, it ensures complete uniformity of feed throughout the facility, without the need to manually place additional feeders, thereby guaranteeing full automation of the feeding process during the rearing phase.

The feeder allows maximum ease of adjustment, with minimum and maximum levels that can be implemented from 5–6 days of age. This ensures a continuous stimulus for birds to feed with constantly renewed

feed that remains fresh and appealing—key factors for perfect turkey rearing. The product is also designed to facilitate the IMPRINTING concept in turkey houses, ensuring the best uniformity of birds from the very first hours of life in areas of maximum thermal comfort.

A stocking rate of 90–100 birds per feeder is recommended during the rearing phase under ideal environmental conditions.

It is important to note that the turkey rearing feeder can be used up to 50–55 days of age for females and 45–50 days for males, always under optimal environmental conditions.



WATERER

ACQUAPRESENTE BT

Turkey fattening unit with 22x22 mm square tube **COD. 4626**

Turkey fattening unit with 28x28 mm square tube **COD. 4627**

The Acquapresente on-demand drinker for turkey fattening has been developed to ensure ease of drinking and rapid water delivery, allowing adult birds to immediately satisfy their water needs and enabling simultaneous drinking by two or more birds, which, through social attraction, also draws nearby birds to the drinker.

It has proven to be the ideal product for preventing excessive litter moisture and, consequently, for ensuring the best environmental conditions for the birds throughout the fattening period—a factor that facilitates rearing even turkeys of any weight under “Free Antibiotic” conditions.

The particular design of the drinking cup, very spacious, combined with the water delivery system, allows for the immediate replenishment of the required water for two

or more adult birds, drastically reducing waiting times at the drinker and immediately meeting the birds' needs with a highly efficient product.

A stocking rate of 35–45 females per cup is recommended, depending on final weight and density per m², and 25–35 males per cup, also depending on final weight and density per m², in both cases under ideal environmental conditions.

There is also the option of using a 28×28 mm tube (Code 4627) for installations up to 150 m in length with a single water supply.



FEEDER MULTITURKEYS

For fattening turkeys of any size and weight. **Cod. 4440T/TL/TP**

The Corti feeder for turkey fattening has been designed to meet the requirements of the fattening phase for turkeys of any weight and sex.

Thanks to the downpipe extension system and the extremely simple application of the anti-waste ring, fattening can be carried out for turkeys from a final weight of 6–7 kg up to 26 kg or more, correlating the weight with the appropriate components. The product has been engineered to withstand any type of impact or stress that even the heaviest birds may cause.

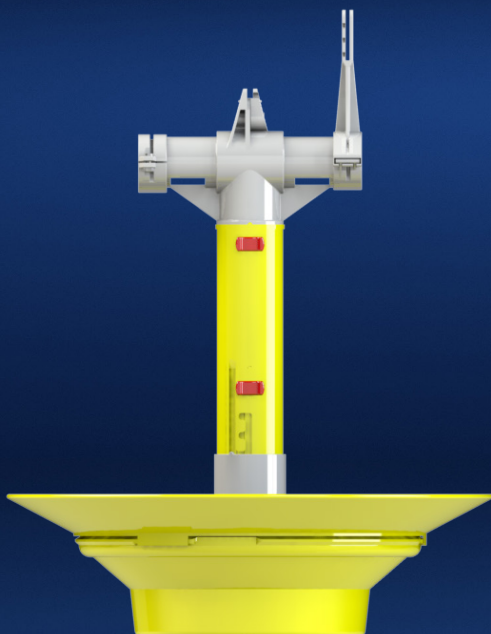
The manual feed level adjustment, very easy to perform, ensures no feed wastage and keeps the feed fresh, appealing, and free from contamination. Filling the feeder at the minimum level, but with frequent actions, ensures a continuous stimulus for the birds to feed completely automatically.

Used in synergy with our Infinity feeder for turkey rearing, it can be implemented from 50–55 days of age for females and 45–50 days for males.

By setting the feeder to the minimum feed level, no further adjustments are necessary, maximizing the automation of feeding even for turkeys of any weight.

It is recommended to keep the outer edge of the feeder (even when using the anti-waste ring) below the birds' breast height to minimize losses caused by unpredictable behavior. Up to 70–80 birds per feeder are recommended under ideal environmental conditions.

Additionally, the feeder attachment system to the tube has been modified to prevent any feed wastage, allowing the automation of cleaning and disinfection operations.





Waterer Acquapresente ST
Rearing. Cód. 4260R



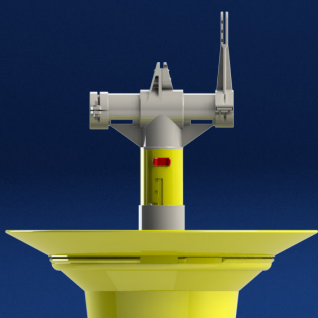
Feeder Infinity TZC3
Rearing Cód. 4455



Waterer Acquapresente BT
Engorde. Cód. 4626/4627

MULTITURKEYS FATTENING FEEDER COD. 4440T/TL/TP

Cod. 4440T



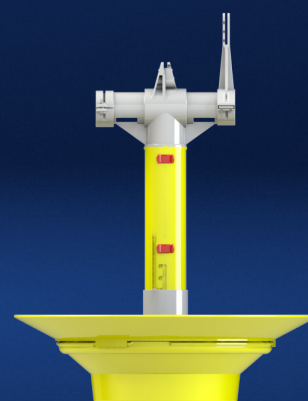
The version with tube without extension and anti-waste ring is recommended for lightweight turkeys, from 6–7 kg at the end of the cycle up to 11–12 kg at the end of the cycle.

Cod. 4440TL



The version with short extension of the downpipe and without anti-waste ring is recommended for turkeys from 11–12 kg up to 16–17 kg at the end of the cycle.

Cod. 4440TP



The version with long extension of the downpipe and with the anti-waste ring applied is recommended for heavy turkeys, from 16–17 kg up to 26 kg or more at the end of the cycle.



Scan the QR code
with your device to
visit our website



Via Volta 4, Monvalle (VA) 21020, Italy
info@cortizootechnici.com | +39 0332 799 985 | www.cortizootechnici.it




MADE IN ITALY

DRINKERS and FEEDERS
For Rearing and Fattening
TURKEYS



Scan the QR code
with your device to
visit our website



Via Volta 4, Monvalle (VA) 21020, Italy
info@cortizootechnici.com | +39 0332 799 985 | www.cortizootechnici.it